

User Manual Book Slim Hood

PX 9022, PX 9002, PX 9012 V
PX 7111, PX 7001,
PX 6001, PX 6021
PX 6011 V, PX 6111
PX 6031 L, PX 6031 V
PX 7111 ZMNA

TABLE OF CONTENTS

Part 1: Safety Warnings	3
Electrical Shock Hazards	3
Part 2: Name of Parts	4
Part 3: Installation	5
Preparations	5
Hood Installation (Slim Hood)	6
Setting the Air Vents	8
Part 4: How to Use	9
Push Type Button	10
Part 5: Maintenance	11
Regular Care	11
Monthly Maintenance for Grease Filter	11
Maintenance for Carbon Filter	11
Part 6: Problem & Solution	12
Part 7: Precaution	12
Part 8: Specification	13

This guide book explains everything you need to know about your new product. Please contact our Customer Care should you need further assistance through www.modena.com

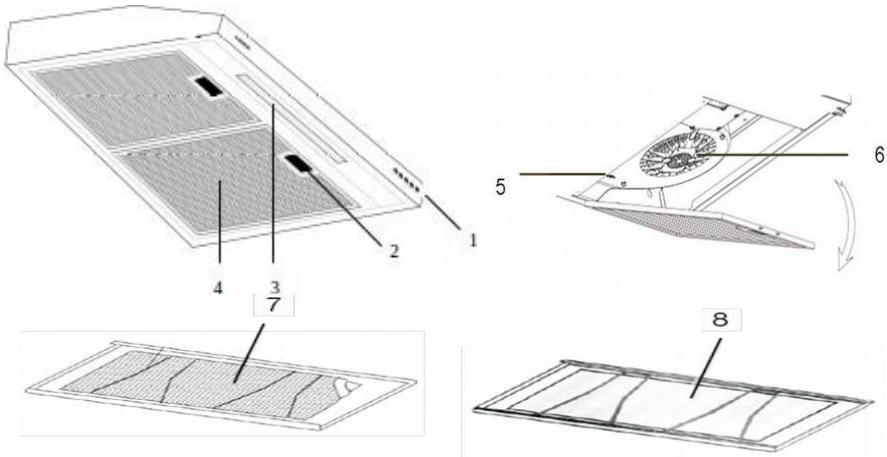
PART 1: SAFETY WARNINGS

- Do not allow children to operate the unit.
- This exhaust hood is designed for home use only, not suitable for the environmental condition, bake shop, barbecue, and other commercial purposes.
- The exhaust hood should be cleaned periodically so that its power is maintained.
- Clean the exhaust hood according to the instructions contained in this book and keeps it away from the danger of being burnt.
- No direct grilling on a gas stove.
- Keep your kitchen remains good circulation.
- Before connecting the unit to a power source, make sure the power cord is in good shape. If there is damage to the power cord, the replacement must be performed by qualified personnel or contact the MODENA Service Center for replacement process.
- The room should have good ventilation during the use of exhaust hood on gas stoves or other fuels.
- The exhaust hood waste pipe should be separated with an air-duct.
- Regulations regarding the air exhaust must be met.
- The unit is not intended to be used by persons (including children) with a physical, sensory, or mental disability, or lack of experience and knowledge unless they have been given supervision or instructions concerning the use of the appliance by the person who is responsible for their safety.
- Children should be supervised to ensure that they are not playing with the unit.
- Do not strike a fire under the sucker of the exhaust hood.
- The exhaust hood is not aimed to be installed on top of the stove that had more than four burners.

Electrical Shock Hazards

- Connect the unit only to a grounded power socket correctly. If you are in doubt, ask advice from an experienced technician who is suitably qualified.
- The failure to follow these instructions may cause electric shock, fire, or other hazards that are fatal.

PART 2: NAME OF PARTS



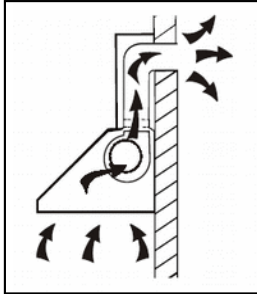
1. Control panel
2. Lock latches
3. Lamp
4. Aluminum filter
5. Air flow direction regulator knob
6. Motor
7. Carbon filter
8. Cassette Aluminum Filter

- The image is a general overview and is not necessarily the same as the product you receive.
- Features and completeness depends on the type of products.

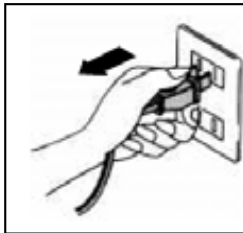
PART 3: INSTALLATION

Preparations

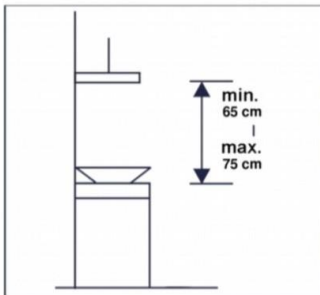
1. If you have a waste pipe outside, the cooker hood can be connected using extraction duct (enamel, aluminum, flexible pipe or a fire-resistant material with an inner diameter of 150 mm), see the following picture:



2. Before installation, switch off the unit and unplug the power cord from the wall socket.



3. Installation of the cooker hood should be right on the top of the stove with a minimum distance of 65 cm and a height of maximum 75 cm from the surface of the stove.



Hood Installation (slim hood)

Cooker hood can be installed on a concrete wall or on the bottom of the kitchen set cabinet wall.

Installing on a concrete wall

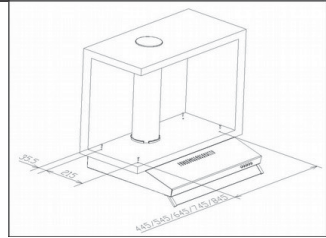
1. Make a center line on the wall where it will be placed in the cooker hood.
2. Attach the template to drill the wall. If it is not completed by a template, attach the cooker hood to the wall and give a sign to make a hole with a center hole spacing on the back of the cooker hood.
3. Make holes on the two previous signs using a drill bit with the diameter of 8 mm or the size of the nut. Then insert the nut into the holes.

CAUTION

- Before drilling, make sure that there is no cable, water pipe and other installations on the walls.
- Put the screw on the two top holes and let a distance of 1 cm between the screw head and the wall surface.
- Attach the cooker hood on the wall that has been fastened by screws by hanging the cooker hood on the screws.
- If the position of the cooker hood on the wall is correct, tighten the two screws.
- Then close the grid.
- Install the safety ventilation using screws 6 mm in diameter.
- Connect the waste pipe with Spigot/ Flange if the cooker hood will be used as ducting/ exhaust system.

Installing on the bottom of the kitchen set cabinet

1. Place the sucker cap on the bottom of the kitchen set cabinet in accordance with the planned position precisely.
2. Make signs at the bottom of the kitchen set cabinet for flexible pipe holes and then make the holes if the cooker hood will use the ducting/ exhaust system.
3. Drill 4 holes with diameter of 6 mm at the appropriate position. Attach the spigot/ flange and then attach the cooker hood and fasten with 4 screws at the position that has been prepared.
4. Attach the controller board on the bottom of the cooker hood to prevent the gap between the cooker hood and the kitchen set.

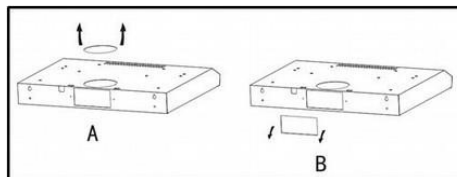


NOTE

- Pipe extension is an additional accessory, not included in the unit.
- Remove the protective layer before mounting.
- There are 2 methods of ventilation, that is: 'horizontal ventilation' and 'vertical ventilation'.

Please note when doing installation

Open the cover of the outlet at its top to apply vertical ventilation system. See Fig. A. Meanwhile, applying the horizontal ventilation system can be done by removing the cover on the outgoing airways on the back of the unit. See Pic.B.



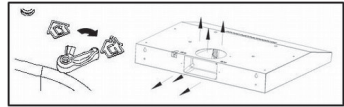
Rectangular outlet for horizontal ventilation is not included.

Setting the air vents

MODENA cooker hood has two (2) working way versions that are:

Ducting System:

1. In this version, the cooker hood works by sucking fumes/ cooking aroma which then is thrown out through the waste pipe.
2. It is needed heat/ flame resistant ducting system is needed to throw away the smoke/ aroma through the outlet.
3. To connect the cooker hood with the waste pipe, Spigot/flange is used. It has been provided in every pack of cooker hoods.
4. To use a cooker hood with this system then turn the control knob of the air-circulation direction to the outside circulation position.

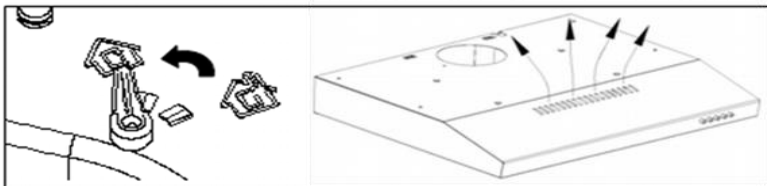


A few things to note for the cooker hood installation using the ducting system:

- Carbon filter should be removed because the sucked cooking aroma will immediately dump out of the room.
- A suction power will be decreased if the waste pipe is too long and has a lot of angles.
- Do not connect the waste pipe to a chimney or a room air duct or a hot air duct.
- If the cooker hood is about to be installed in buildings or apartments, preferably before the installation of the waste pipe, it is consulted first with the responsible person of the building/ apartment.
- The use of a cooker hood with ducting system should be in an open room with a good air circulation system.

Recirculation System:

1. In this version, the cooker hood works by sucking fumes/ cooking aroma which then will be filtered through an aluminum filter and a carbon filter respectively. The smoke is filtered and then flowed back into the room (recirculation). This system is used if the cooker hood installation place does not allow the ducting system installation.
2. To use a cooker hood with this system then turn the control knob of the air circulation direction to the position of recirculation and install the cover of the waste pipe.



A few things to note for the cooker hood installation using recirculation system:

- Both carbon filters and filter aluminum should be used.
- The position of the two filters must be precise.
- The holes where the air comes out located on the front of the cooker hood cabinet should not be closed.

NOTE

Carbon filters are installed at the rear of the grill and must be replaced after three months.

WARNING

Carbon filters cannot be washed or recycled. The maximum use of carbon filters is for 120-hour use and must be replaced afterwards.

PART 4: HOW TO USE

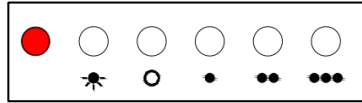
Connect the plug to the power outlet.

Turning on or turning off the cooker hood and cooker hood lights can be done by sliding or pressing a motor speed regulator button and the lighting button as shown below.

NOTE

The setting of the cooker hood motor speed is adjusted to the thickness of the smoke / steam that arises when cooking.

Push Type Button



On/ Off Buttons

The Buttons which are for turning off or turning on the cooker hood



Motor speed button – LOW

Suitable for air circulation used in the kitchen or cooking conditions that does not cause a lot of smoke or steam.



Motor speed button - MEDIUM

Air circulation speed that is suitable for a cooking process that raises a medium volume of smoke or fumes.



Motor speed button - HIGH

When the level of smoke or steam produced is high enough, then use a high-speed level for effective air circulation.



Lamp Button

Button to turn on/off lights

NOTE

If the low/ medium/ high speed button pressed simultaneously, then the unit will turn on the high speed only.

CAUTION

Avoid a direct contact between the stove being turned on and the cooker hood. To get the optimal filtering, cooker hood should be turned off 20-30 minutes after cooking is finished.

PART 5: MAINTENANCE

MODENA cooker hood specifically designed for long term use so that it does not require complicated maintenance. However, there are some things that are recommended to take care of your cooker hood so that the quality is maintained.

Turn the unit off and unplug the power cord from the power source before cleaning.

Regular care

Use a soft cloth dampened with a mixture of warm water and mild soap or household detergent. Do not use metallic pads, chemicals, abrasive materials or a stiff brush to clean the unit.

Monthly Maintenance for a Grease Filters

Cleaning the filter can prevent the risk of fire. Filter captures grease, smoke and dust that filters directly affect the efficiency of the cooker hood. If it is not cleaned, the residual grease (potentially flammable) will accumulate in the filter. Clean it with household detergents.

Maintenance for Carbon Filters

Attach a carbon filter on the unit to be used with a recirculation system (not the ducting system). This filter should be replaced at least every three months or depends on how often the use of cooker hood

PART 6: PROBLEM & SOLUTION

Consult the following troubleshooting before contacting our Service Center regarding your exhaust hood:

Problem	Possible Cause	Recommended Action
Exhaust hood malfunctioning	<ul style="list-style-type: none"> • Power cord is not yet connected to the electrical outlet. • Electrical outlet does not have electricity current in it. 	<ul style="list-style-type: none"> • Connect the power cord to the electrical outlet. • Connect the power cord to a properly functioning electrical outlet.
Reduced suction power	<ul style="list-style-type: none"> • Dirty aluminum filter. • Dirty carbon filter. 	<ul style="list-style-type: none"> • Clean the aluminum filter, dry it and place it back on the vent hood. • Replace the carbon filter with a new one.
Motor fan malfunctioning	Broken motor coil.	Contact MODENA Service Center.
Motor stops working after a while	Safety thermal regulator is active.	<ul style="list-style-type: none"> • The vent hood is installed too close to the stove. • Air circulation is not optimal. • Contact MODENA Service Center.

PART 7: PRECAUTION

- Make sure the hood is turned on after a while to allow the air around the cooking area to circulate properly and make sure the hood is turned off after this process..
- Periodically inspect the filter and oil reservoir. Make sure that the filter is in clean and good condition and make sure the oil reservoir is not exceeding the specified limit.
- If you smell burnt / burnt smell from the hood, immediately turn off the hood and contact the MODENA Service Center.
- Perform a routine service on your stove every 3 (three) months, because if there are problems / problems with your exhaust hood, it can be immediately identified and repaired. Contact MODENA Service Center

PART 8: SPECIFICATION

MODEL	PX 9022	PX 9002	PX 7001	PX 9012 V	PX 6021
Type	Slim hood	Slim hood	Slim hood	Slim hood	Slim hood
Cabinet Material	Metal + Acrylic	Metal + Acrylic	Metal + Acrylic	Metal	Metal + Acrylic
Color of Cabinet	Black	Black	Black	Silver	Black
Color of Front Panel	Black	Black	Black	Silver	Black
Number of Motor	2	2	1	2	1
Lamp Type	LED Stripe	Bulb Lamp	Bulb Lamp	Bulb Lamp	LED Stripe
Control Type	Push button	Push button	Push button	Push button	Push button
Speed	3	3	3	3	3
Filter type	Cassette Aluminum Filter + Carbon Mat Filter	Acrylic Filter + Carbon Mat Filter	Acrylic Filter + Carbon Mat Filter	Acrylic Filter + Carbon Mat Filter	Cassette Aluminum Filter + Carbon Mat Filter
Motor power	2 x 100 Watt	2 x 100 Watt	1 x 100 Watt	2 x 100 Watt	1 x 100 Watt
Lamp power	2 x 1.5 Watt	40 Watt	40 Watt	40 Watt	1 x 1.5 Watt
Dimension (L x W x H) mm	900 x 500 x 80	900 x 500 x 80	700 x 500 x 80	900 x 500 x 80	600 x 500 x 80

MODEL	PX 6001	PX 6011 V	PX 6031 L	PX 6031 V
Type	Slim hood	Slim hood	Slim hood	Slim hood
Cabinet Material	Metal + Acrylic	Metal	Metal	Metal
Color of Cabinet	Black	Silver	Black	Silver
Color of Front Panel	Black	Silver	Black	Silver
Number of Motor	1	1	1	1
Lamp Type	Bulb Lamp	Bulb Lamp	E14 LED	E14 LED
Control Type	Push button	Push button	Push button	Push button
Speed	3	3	3	3
Filter type	Acrylic Filter + Carbon Mat Filter	Acrylic Filter + Carbon Mat Filter	Cassette Aluminum Filter + Carbon Filter	Cassette Aluminum Filter + Carbon Filter
Motor power	1 x 100 Watt	1 x 100 Watt	1 x 55 Watt	1 x 55 Watt
Lamp power	40 Watt	40 Watt	5.5 Watt	5.5 Watt
Dimension (L x W x H) mm	600 x 500 x 80	600 x 500 x 80	600 x 452 x 85	600 x 452 x 85

MODEL	PX 7111	PX 7111 ZMNA	PX 6111
Type	Slim hood	Slim hood	Slim hood
Cabinet Material	Metal	Metal	Metal
Color of Cabinet	Black	Black	Black
Color of Front Panel	Black	Black	Black
Number of Motor	1	1	1
Lamp Type	Bulb Lamp	Bulb Lamp	Bulb Lamp
Control Type	Push Button	Push Button	Push Button
Speed	3	3	3
Filter type	Cassette Aluminum Filter + Carbon Mat Filter	Cassette Aluminum Filter + Carbon Mat Filter	Cassette Aluminum Filter + Carbon Mat Filter
Motor power	1 x 70 Watt	1 x 70 Watt	1 x 70 Watt
Lamp power	40 Watt	40 Watt	40 Watt
Dimension (L x W x H) mm	700 x 500 x 83	700 x 500 x 83	600 x 500 x 83

The specification of these tools can be changed without notice to improve product quality. The images in this manual are an overview and may not look exactly like the actual product.

The values indicated on the labels or in the documentation contained therein were obtained from laboratories conforming to the relevant standards. Depending on the environment and operational conditions of the device.



PT MODENA INDONESIA

Jl. Industri Raya I Blok D-8,
Jatiuwung, Tangerang 15135