

**MODENA**

# **User Manual Book**

Wall Chimney Hood

CX 7712 L

# Table Of Content

Part 1: Important Safety Information	3
Electrical Shock Hazards	3
Part 2: Name Of Parts	5
Part 3: Installation	6
CX 7712 L	6
Preparations of Installation:	6
Installing the Cook Hood on The Wall	6
Creating holes on the wall and methods for installing bracket	7
Work Method	8
Exhaust System	8
Re-circulation System	9
Part 4: How To Use	11
CX 7712 L	11
Push Button Type	11
Part 5: Maintenance	12
Cleaning the Cabinet	12
Cleaning the Filter	12
Aluminum Filter	12
Carbon Filter	13
Changing The Light Bulb	13
Part 6: Troubleshooting	14
Part 7: Precaution	15
Part 8: Specification	16

## **PART 1: IMPORTANT SAFETY INFORMATION**

- Do not allow children to operate the unit.
- This exhaust hood is designed for home use only, not suitable for the environmental condition, bake shop, barbecue, and other commercial purposes.
- The exhaust hood should be cleaned periodically so that its power is maintained.
- Clean the exhaust hood according to the instructions contained in this book and keeps it away from the danger of being burnt.
- No direct grilling on a gas stove.
- Keep your kitchen remains good circulation.
- Before connecting the unit to a power source, make sure the power cord is in good shape. If there is damage to the power cord, the replacement must be performed by qualified personnel or contact the MODENA Service Center for replacement process.
- The room should have good ventilation during the use of exhaust hood on gas stoves or other fuels.
- The exhaust hood waste pipe should be separated with an air-duct.
- Regulations regarding the air exhaust must be met.
- The unit is not intended to be used by persons (including children) with a physical, sensory, or mental disability, or lack of experience and knowledge unless they have been given supervision or instructions concerning the use of the appliance by the person who is responsible for their safety.
- Children should be supervised to ensure that they are not playing with the unit.
- Do not strike a fire under the sucker of the exhaust hood.
- The exhaust hood is not aimed to be installed on top of the stove that had more than four burners.
- CAUTION: Accessible parts may become hot when used with cooking appliances.

### **Electrical Shock Hazards**

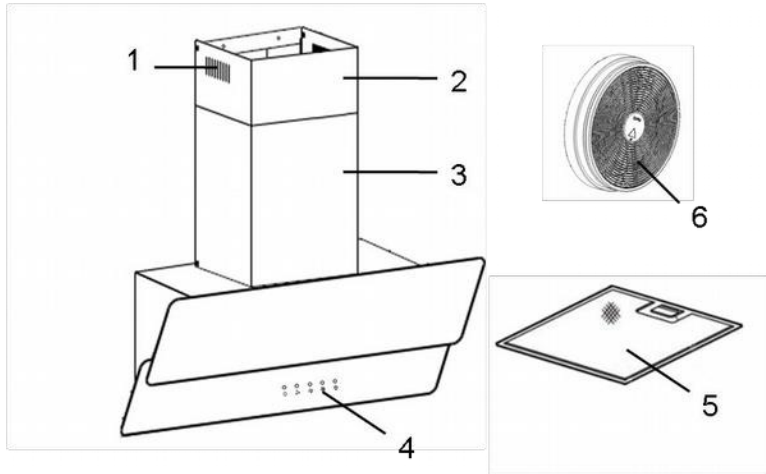
- Connect the unit only to a grounded power socket correctly. If you are in doubt, ask advice from an experienced technician who is

suitably qualified.

- The failure to follow these instructions may cause electric shock, fire, or other hazards that are fatal.

## PART 2: NAME OF PARTS

CX 7712 L



\* The image is a general overview and is not necessarily the same as the product you receive.

\* Features and other attributes are depending on the type of products

1. Circulation Hole
2. Upper Chimney
3. Main Chimney
4. Control Panel
5. Aluminum Filter
6. Carbon filter

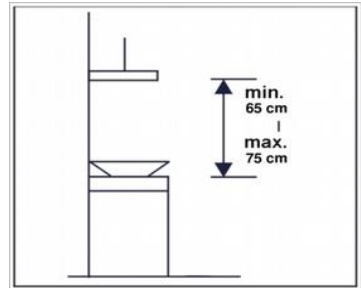
## PART 3: INSTALLATION

CX 7712 L

### Preparations of Installation

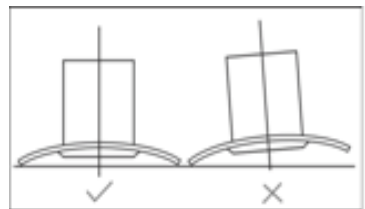
Exhaust hood is equipment which sucks smoke and cooking fragrance. With a vent hood, your kitchen will be free from oil particles that may produce bad odor

1. Check the strength of wall on which the exhaust hood is to be installed. Make sure the wall can sustain the weight/ load of the vent hood.
2. The exhaust hood should be installed precisely over the stove at a vertical distance of 65-75 cm from the stove surface. Especially for incline/angle type the vertical distance is 35-45 cm.

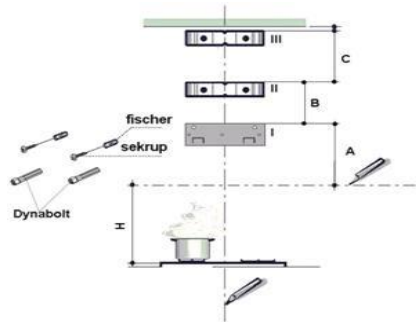


### Installing the Cook Hood on The Wall

Exhaust hood must be installed perpendicularly to prevent the oil from flowing to one side and dripping out of the vent hood.



## Creating Holes On The Wall And Methods For Installing Bracket



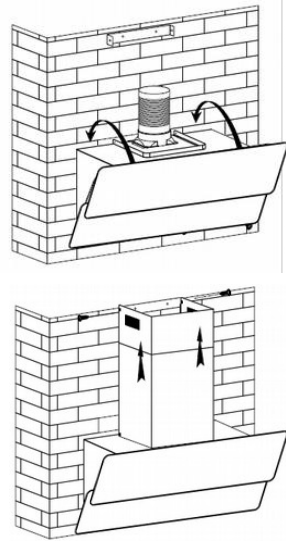
Model	A (cm)	B (cm)	C (cm)
CX 7712 L	25	39	39

### NOTES:

- Height / distance are 35 - 45 cm.
- For CX 7712 L, we recommend installation for use with a stove without top cover.
- Height / Distance C can be shortened in accordance with the ceiling height.
- Make a vertical line on the wall to its highest point or to an appropriate height on the center part of the area where the vent hood is to be installed
- Make a horizontal line at H (cm) distance from the stove to mark the lowest limit for the vent hood.
- Install bracket I on the wall just like in the above picture up to height A and mark the holes for fisher.
- Install bracket II on the wall just like in the above picture up to height B and mark the holes for fisher hole.
- Install bracket III on the wall just like in the above picture up to height C and mark the holes for fisher hole.
- Drill the wall with a  $\varnothing$  8 mm for fisher in all marked sections.
- Insert the Fischer into the hole.
- Install all brackets using the provided Fischer screws

## Installing the Cook Hood's Body

- Install hood on the bracket I on the wall
- Connect the exhaust system with the spigot / flange if the vent hood is to be operated as a ducting / exhaust system).
- Install the main chimney and the upper chimney on brackets I and II with the available screw.

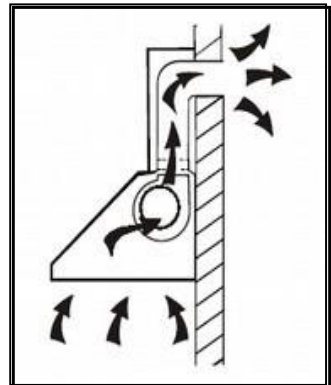


## Work Method

MODENA hood have 2 versions of work method, as following:

### Exhaust System

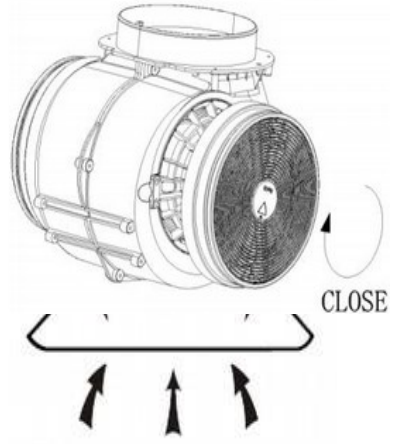
- In this mode, the hood operates by sucking the smoke / cooking odor and then discharging it out of the vent through the exhaust system.
- To connect the hood with the discharge duct, use "spigot/flange" is designed with a diameter of 150 mm.





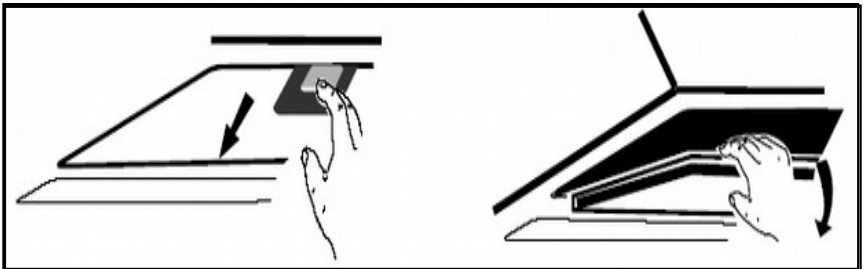
Several things which require attention in installing the ducting system vent hood:

1. Carbon filter must be removed. Only use the aluminum filter.
2. If the hood is to be installed in a multi-storied building or an apartment, consult with the person in charge of the building / apartment prior to installing the exhaust system.
3. Hood with ducting system should be used in an open-air room with good air circulation.



### Re-circulation System

- If you do not have an outlet to the outside, exhaust pipe is not required and the installation is similar to the one show in section "Installation (Exhaust System)".
- Activated carbon filter can be used to trap odors. In order to install the activated carbon filter, the grease filter should be detached first by press the lock and pull it downward



- Plug the activated carbon filter into the unit and turn it in clockwise direction. Repeat the same on the other side.

**NOTE:**

- Make sure the filter is securely locked. Otherwise, it would loosen and cause dangerous.
- When activated carbon filter attached, the suction power will be lower.
- Carbon filters are installed at the rear of the grill and had to be replaced after three months.

**WARNING!**

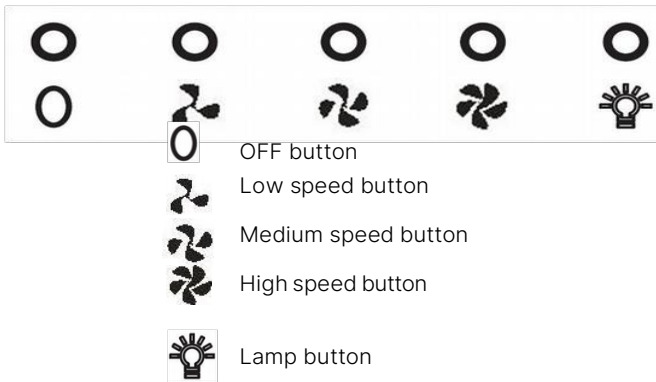
Carbon filters cannot be wash or recycle. Maximum use of carbon filter is 120 hours of use and must be replaced afterwards. Carbon filters should not be exposed to heat.

## PART 4: HOW TO USE

CX 7712 L

- Connect the power cord with a power socket.
- Slide or press the motor speed regulator button and light switch to turn vent hood on or off as shown in the following picture.

Push Button Type

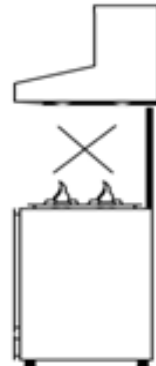


### NOTES:

Adjust the motor speed of the vent hood according to the thickness of smoke / steam generated by the cooking process.

### CAUTION!

- Avoid direct contact between the vent hood and open flames from the stove.
- To obtain optimum filtering result, turn off the vent hood 20 – 30 minutes after having finished cooking.



MODENA exhaust hood specifically designed for a long term use so that

## PART 5: MAINTENANCE

it does not require complicated maintenance. However, there are some things that are recommended to take care of your exhaust hood so that the quality is maintained.

Turn the unit off and unplug the power cord from the electrical source before cleaning

### Cleaning the Cabinet

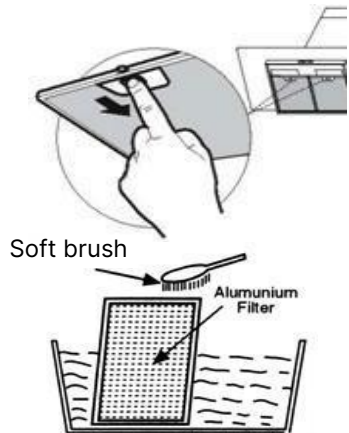
To clean the surface of exhaust hood cabinet from sticky oil particles, use a cloth / sponge and soap water and then dry it out. The cabinet should be cleaned after each cooking session.

### Cleaning the Filter

Smoke / steam from cooking and oil particles generated by the cooking process will immediately absorbed by the filter and therefore the filter should be cleaned regularly

#### Aluminum Filter

- For routine usage, clean the aluminum filter once every 10 – 15 days by soaking the filter in a container filled with soap water for 1 hour (look at image) and use a soft brush to scrub it and then dry the filter thoroughly before placing it back to its proper position.
- Aluminum filter can be cleaned using a dishwasher.
- Avoid bending the filter when you wash it.



## Carbon Filter

Carbon filter must be replaced with a new one at least once every 4 months or when the carbon filter is no longer capable to absorb the cooking odor.

- Remove the aluminum filter first.
- Remove the carbon filter by pulling the hook (for square-shaped filter) or rotating it (for round – shaped filter).
- Install the new carbon filter.
- Reinstall the aluminum filter.

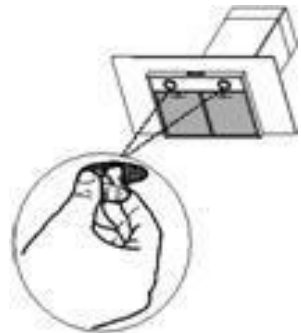


### **ATTENTION:**

Carbon filter cannot be washed and must be replaced with a new one in accordance with the description above

## Changing The Light Bulb:

1. Turn off the Hood and unplug the power cord.
2. Disconnect the wire and remove the lamp from exhaust hood body.
3. Change the bulb with the same size and power type.
4. Install the new lamp on the exhaust hood body and reconnect the wire



## PART 6: TROUBLESHOOTING

Do check the things below before contacting our Service Center, if there is any interference with your exhaust hood:

Problem	Possible Cause	Recommended Action
Exhaust hood is not working	Power cord is not yet connected to the electrical socket. Electrical socket does not have any electricity	Connect the power cord to the electrical socket. Connect the power cord to a properly functioning electrical socket
Deteriorating of Suction Power	Dirty aluminum filter Dirty carbon filter	Clean the aluminum filter, dry it and place it back on the exhaust hood. Replace the carbon filter with a new one.
Motor fan is not functioning	Motor coil is broken	Contact MODENA Call Center
Motor stops working after a while	Safety thermal regulator is active	The vent hood is installed too close to the stove. Air circulation is not optimal. Contact MODENA Service Center.

## **PART 7: PRECAUTION**

- Make sure the hood is turned on after a while to allow the air around the cooking area to circulate properly and make sure the hood is turned off after this process.
- Periodically inspect the filter and oil reservoir. Make sure that the filter is in clean and good condition and make sure the oil reservoir is not exceeding the specified limit.
- If you smell burnt / burnt smell from the hood, immediately turn off the hood and contact the MODENA Service Center.
- Perform a routine service on your stove every 3 (three) months, because if there are problems / problems with your exhaust hood, it can be immediately identified and repaired. Contact MODENA Service Center

## PART 8: SPECIFICATION

Model	CX 7712 L
Type	Chimney
Cabinet Material	Metal
Cabinet Color	Black
Front Panel Color	Black
Motor	1 Turbo
Lamp	2 LED
Fan Speed	3
Ionizer (Germinator)	No
Filter Type	Cassette Aluminum + Carbon Filter
Control Panel	Push Button
Germinator / Ionizer	No
Voltage ( V )	220 – 240V~ 50/60Hz
Suction Power (m <sup>3</sup> /h)	700
Motor Power	130 W
Lamp Power	2 x 1 W
Dimension (L x W x H) mm	695 x 325 x ( 680 – 1070 )



