

MODENA

User Manual Book

Wall Chimney Hood

CX 9156

Table Of Content

Part 1: Important Safety Information	3
Electrical Shock Hazards	3
Part 2: Name Of Parts	5
Part 3: Installation	6
Preparations Of installation	6
Installation (DUCTING / EXHAUST System)	7
Chimney Installation for Glass Model And T Shape Model	8
For Tower Model	9
Installation (Re-circulating System)	10
Part 4: How To Use	12
Touch Button Type / Touch Control	12
Timer's Button	12
LCD Display	13
Part 5: Maintenance	14
Cleaning The Cabinet	14
Cleaning The Filter	14
Aluminum Filter	14
Carbon Filter	15
Cleaning Oil Container	15
Changing The Light Bulb	16
Part 6: Troubleshooting	17
Part 7: Precaution	18
Part 8: Specification	19

PART 1: IMPORTANT SAFETY INFORMATION

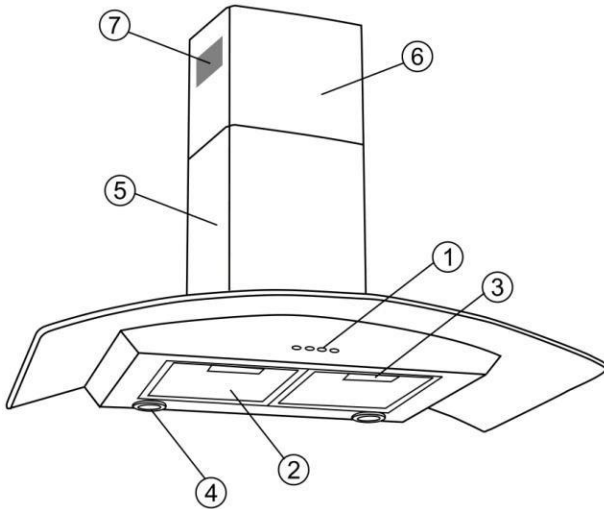
- Do not allow children to operate the unit.
- This exhaust hood is designed for home use only, not suitable for the environmental condition, bake shop, barbecue, and other commercial purposes.
- The exhaust hood should be cleaned periodically so that its power is maintained.
- Clean the exhaust hood according to the instructions contained in this book and keeps it away from the danger of being burnt.
- No direct grilling on a gas stove.
- Keep your kitchen remains good circulation.
- Before connecting the unit to a power source, make sure the power cord is in good shape. If there is damage to the power cord, the replacement must be performed by qualified personnel or contact the MODENA Service Center for replacement process.
- The room should have good ventilation during the use of exhaust hood on gas stoves or other fuels.
- The exhaust hood waste pipe should be separated with an air-duct.
- Regulations regarding the air exhaust must be met.
- The unit is not intended to be used by persons (including children) with a physical, sensory, or mental disability, or lack of experience and knowledge unless they have been given supervision or instructions concerning the use of the appliance by the person who is responsible for their safety.
- Children should be supervised to ensure that they are not playing with the unit.
- Do not strike a fire under the sucker of the exhaust hood.
- The exhaust hood is not aimed to be installed on top of the stove that had more than four burners.
- CAUTION: Accessible parts may become hot when used with cooking appliances.

Electrical Shock Hazards

- Connect the unit only to a grounded power socket correctly. If you are in doubt, ask advice from an experienced technician who is suitably qualified.

- The failure to follow these instructions may cause electric shock, fire, or other hazards that are fatal.

PART 2: NAME OF PARTS



* The image is a general overview and is not necessarily the same as the product you receive.

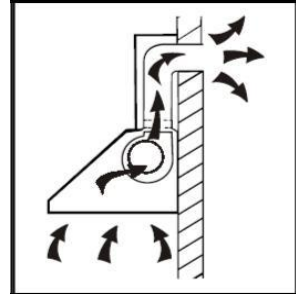
* Features and other attributes are depending on the type of products

1. Control Panel
2. Cassette Aluminum Filter
3. Cassette Aluminum Filter Handle
4. Lamp
5. Main Chimney
6. Upper Connector Chimney
7. Circulation Hole

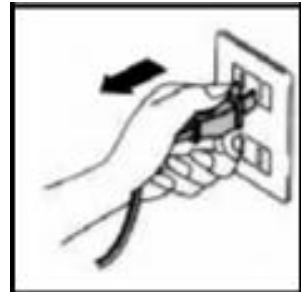
PART 3: INSTALLATION

Preparations Of installation

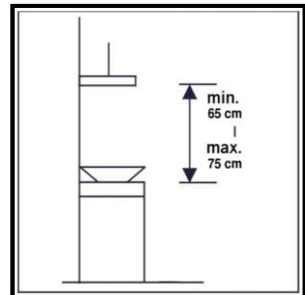
- If you have a waste pipe outside, the exhaust hood can be connected using extraction duct (enamel, aluminum, flexible pipe or a fire-resistant material with an inner diameter of 150 mm), see the following picture:



- Before installation, switch off the unit and unplug the power cord from the power socket



- Installation of the exhaust hood should be right on the top of the stove with a minimum distance of 65 cm and a height of maximum 75 cm from the surface of the stove



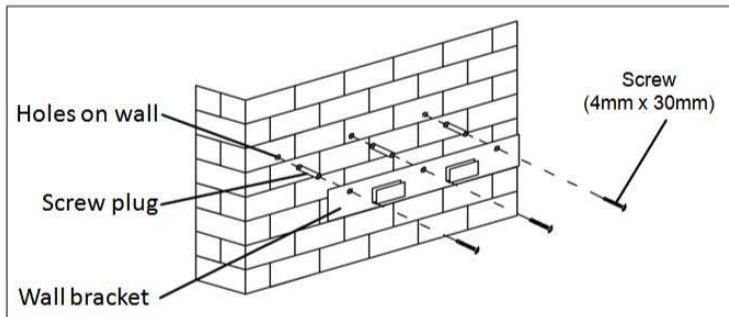
Installation (DUCTING / EXHAUST System)

ATTENTION!

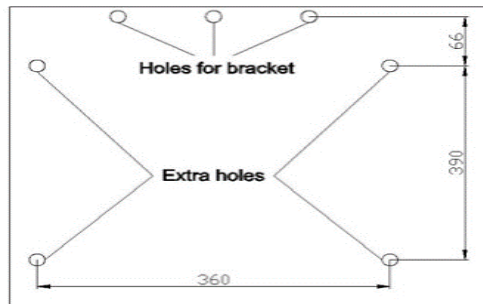
Observe the warning in the instruction sheet concerning the operation of the appliance when air is discharged from the room

When the range hood and appliance supplied with energy other than electricity are simultaneously in operation, the negative pressure in the room must be not exceed 4 Pa (4×10^{-5} Bar)

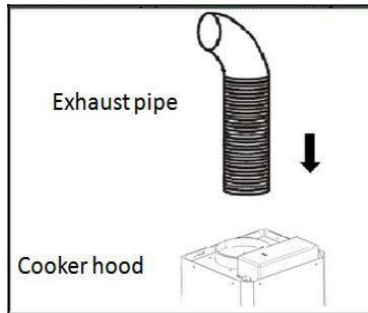
- Drill 3 x 8mm holes to accommodate the bracket. Screw and tighten the bracket onto the wall with the screws & screw plugs provided



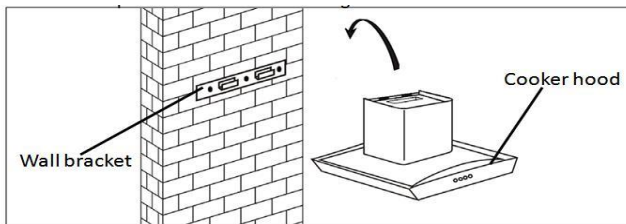
- For inclined panel Model, need to drill 4 x 8mm extra holes & fixing screws & screw plugs before installation.



- Leave up the exhaust hood and hang onto the wall bracket hook.

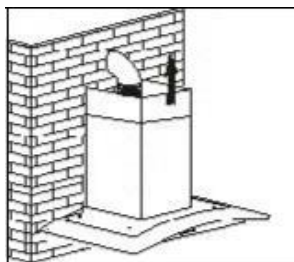


- Fix the one-way-valve to the air outlet of the exhaust hood. Then, attached the exhaust pipe into the one-way-valve as shown below.

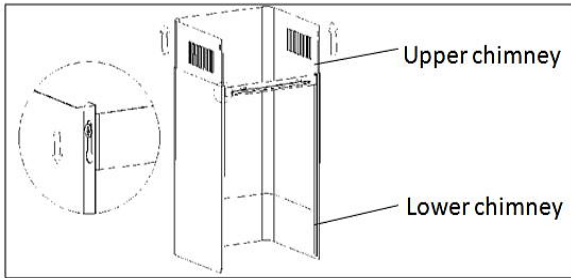


Chimney Installation for Glass Model And T Shape Model

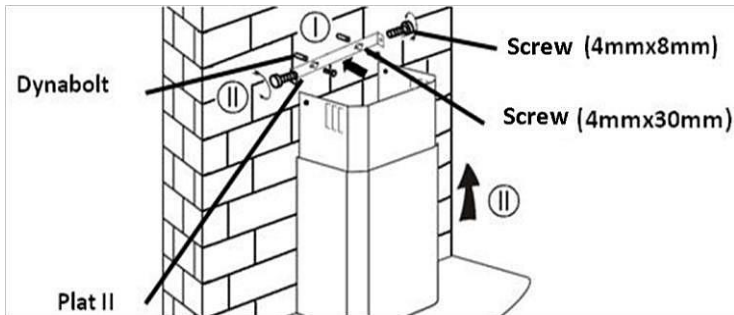
- By putting the upper chimney into lower chimney. Then pulling out the upper chimney upwards. Adjust to reach the height required.



- Sliding the chimney to adjust the chimney height. When the height you required is reached, then hang the fixing hole to the fixing screws as showed in below pictures

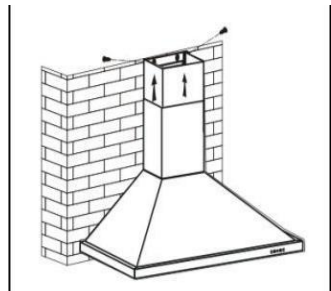


- Drill 2 × 8 mm holes to accommodate the plate II. Screw and tighten the plate II into the wall with two screws provided. Assembly the chimney into the unit and fix it with two screw.

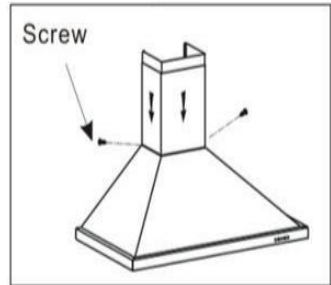


For Tower Model

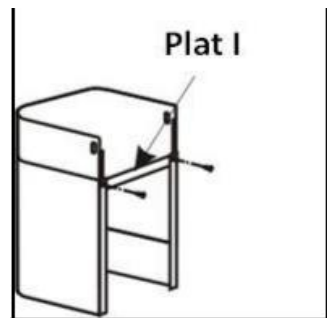
- Put the inner chimney into upper chimney. Then pulling out the upper chimney upwards. Adjust to reach the height required



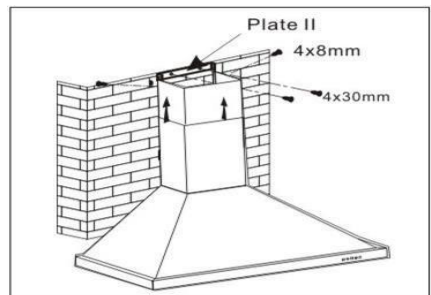
- Fix the lower chimney with two pieces of 4x8 mm screws



- Sliding the chimney to adjust the chimney height. When the height you required is reached, then fix two pieces of 4x8 mm screws onto the hole fixing with plate I as showed in below pictures

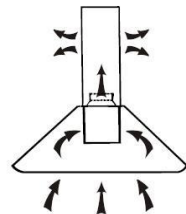


- Drill 2 x 8 mm holes to accommodate the plate II. Screw and tighten the plate II into the wall with two screws provided.
- Assembly the chimney into the unit and fix it with two screws.

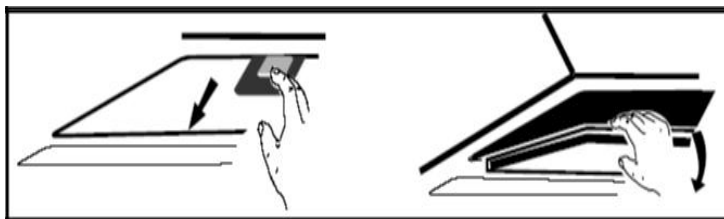


Installation (Re-circulating System)

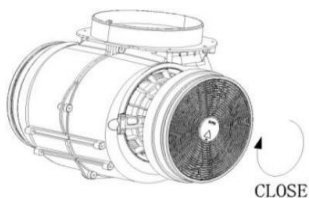
- If you do not have an outlet to the outside, exhaust pipe is not required and the installation is similar to the one show in section "Installation (DUCTING / EXHAUST System)".
- Activated carbon filter can be used to trap odors.



- In order to install the activated carbon filter, the grease filter should be detached first by press the lock and pull it downward.



- Plug the activated carbon filter into the unit and turn it in clockwise direction. Repeat the same on the other side.



NOTE:

- Make sure the filter is securely locked. Otherwise, it would loosen and cause dangerous.
- When activated carbon filter attached, the suction power will be lower.
- Carbon filters are installed at the rear of the grill and had to be replaced after three months.

WARNING!

Carbon filters cannot be wash or recycle. Maximum use of carbon filter is 120 hours of use and must be replaced afterwards. Carbon filters should not be exposed to heat

PART 4: HOW TO USE

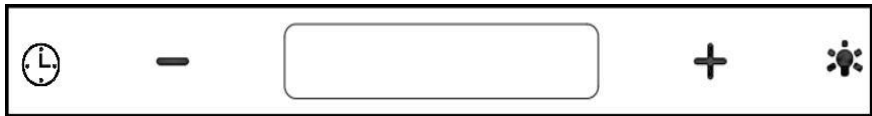
Plug the power cord into the power socket.

Turning on or turning off the exhaust hood and exhaust hood lights can be done by sliding or pressing a motor speed regulator button and the lighting button as shown below.

NOTE:

The setting of the exhaust hood motor speed is adjusted to the thickness of the smoke/ steam that arises when cooking.

Touch Button Type / Touch Control






After plug in power, it will automatically set in standby mode

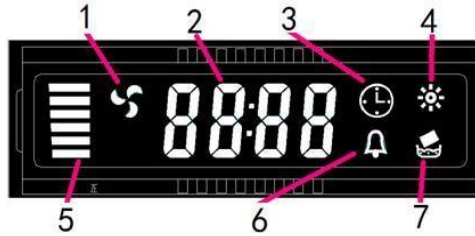
Timer's Button

Times setting keep pressing it while in standby mode to enter time setting, hour display will flash, press "+" or "-" to set the time.

Press "⌚" to change into minute setting, press "+" or "-" to set the time, press "⌚" again or wait 10s to finish the time setting. Timer setting, short press during working mode, pre-set cycle: off→15mins→30mins→45mins→off:

-  Speed increase button
-  Speed decrease button
-  Light button

LCD Display



1. Fan symbol will be active when the fan is working
2. Time display
3. Timer
4. Light
5. Fan speed
6. Alarm symbol
7. Active buzzer carbon replacement symbol

CAUTION:

- Avoid a direct contact between the stove being turned on and the exhaust hood.
- To get the optimal filtering, an exhaust hood should be turned off 20-30 minutes after cooking is finished.

PART 5: MAINTENANCE

MODENA exhaust hood specifically designed for a long term use so that it does not require complicated maintenance. However, there are some things that are recommended to take care of your exhaust hood so that the quality is maintained.

Turn the unit off and unplug the power cord from the electrical source before cleaning

Cleaning The Cabinet

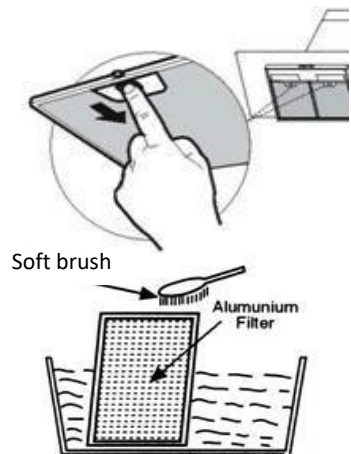
To clean the surface of exhaust hood cabinet from sticky oil particles, use a cloth / sponge and soap water and then dry it out. The cabinet should be cleaned after each cooking session.

Cleaning The Filter

Smoke / steam from cooking and oil particles generated by the cooking process will immediately absorbed by the filter and therefore the filter should be cleaned regularly

Aluminum Filter

- For routine usage, clean the aluminum filter once every 10 – 15 days by soaking the filter in a container filled with soap water for 1 hour (look at image) and use a soft brush to scrub it and then dry the filter thoroughly before placing it back to its proper position.
- Aluminum filter can be cleaned using a dishwasher.
- Avoid bending the filter when you wash it.



Carbon Filter

Carbon filter must be replaced with a new one at least once every 4 months or when the carbon filter is no longer capable to absorb the cooking odor.

- Remove the aluminum filter first.
- Remove the carbon filter by pulling the hook (for square-shaped filter) or rotating it (for round – shaped filter).
- Install the new carbon filter.
- Reinstall the aluminum filter.



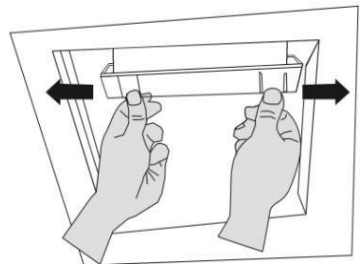
ATTENTION:

Carbon filter cannot be washed and must be replaced with a new one in accordance with the description above

Cleaning Oil Container

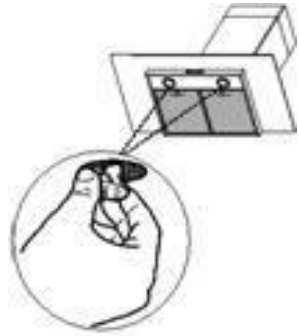
Clean the oil cup when cleaning aluminum filter together, or if the cup already filled a half of cup.

- Remove the oil cup by slide to left or right as the slot.
- Wash using soap water, rinse and drying.
- Re-install the oil cup on the exact position.



Changing The Light Bulb

1. Turn off the Hood and unplug the power cord.
2. Disconnect the wire and remove the lamp from exhaust hood body.
3. Change the bulb with the same size and power type.
4. Install the new lamp on the exhaust hood body and reconnect the wire



PART 6: TROUBLESHOOTING

Do check the things below before contacting our Service Center, if there is any interference with your exhaust hood:

Problem	Possible Cause	Recommended Action
Exhaust hood is not working	Power cord is not yet connected to the electrical socket. Electrical socket does not have any electricity	Connect the power cord to the electrical socket. Connect the power cord to a properly functioning electrical socket
Deteriorating of Suction Power	Dirty aluminum filter Dirty carbon filter	Clean the aluminum filter, dry it and place it back on the exhaust hood. Replace the carbon filter with a new one.
Motor fan is not functioning	Motor coil is broken	Contact MODENA Call Center
Motor stops working after a while	Safety thermal regulator is active	The vent hood is installed too close to the stove. Air circulation is not optimal. Contact MODENA Service Center.

PART 7: PRECAUTION

- Make sure the hood is turned on after a while to allow the air around the cooking area to circulate properly and make sure the hood is turned off after this process.
- Periodically inspect the filter and oil reservoir. Make sure that the filter is in clean and good condition and make sure the oil reservoir is not exceeding the specified limit.
- If you smell burnt / burnt smell from the hood, immediately turn off the hood and contact the MODENA Service Center.
- Perform a routine service on your stove every 3 (three) months, because if there are problems / problems with your exhaust hood, it can be immediately identified and repaired. Contact MODENA Service Center

PART 8: SPECIFICATION

Model	CX 9156
Type	Wall
Cabinet Material	Stainless Steel + tempered glass
Cabinet Color	Stainless
Front Panel Color	Black
Motor	1 Turbo
Lamp	2 LED
Fan Speed	3
Filter Type	Cassette Aluminum + Carbon + Vit. C
Control Panel	Push Button
Ionizer (Germinator)	Yes
Voltage (V)	220 – 240V~ 50/60 Hz
Suction Power (m ³ /h)	1200
Motor Power	300 W
Lamp Power	2 x 2 W
Dimension (L x W x H) mm	910 x 505 x (550 – 1030)

